

The background is a textured, blue-toned illustration of a tree with a large, pale moon in the upper left corner. The tree's branches are dark and intricate, set against a lighter blue background with visible brushstrokes. The moon is a large, pale, circular shape in the upper left. The overall mood is somber and atmospheric.

HAWKINS HQ

Dramaturg
Marni Marriott

HAWKINS HQ



Marni Marriott
Landscape I (After David Wojnarowicz), 2025
Oil and china marker on canvas panel.
16 x 20 in.



HAWKINS HQ



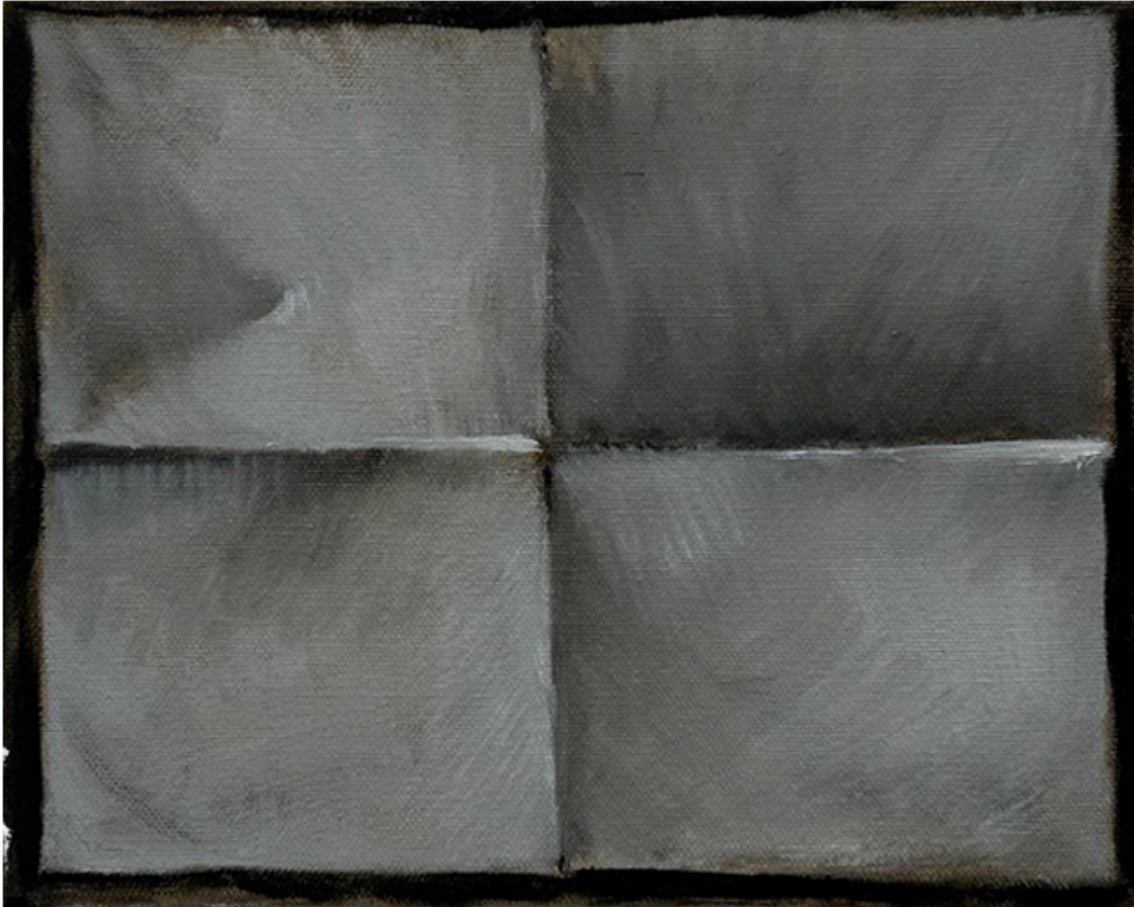
Marni Marriott

Landscape II (After David Wojnarowicz), 2025

Oil and china marker on canvas panel.

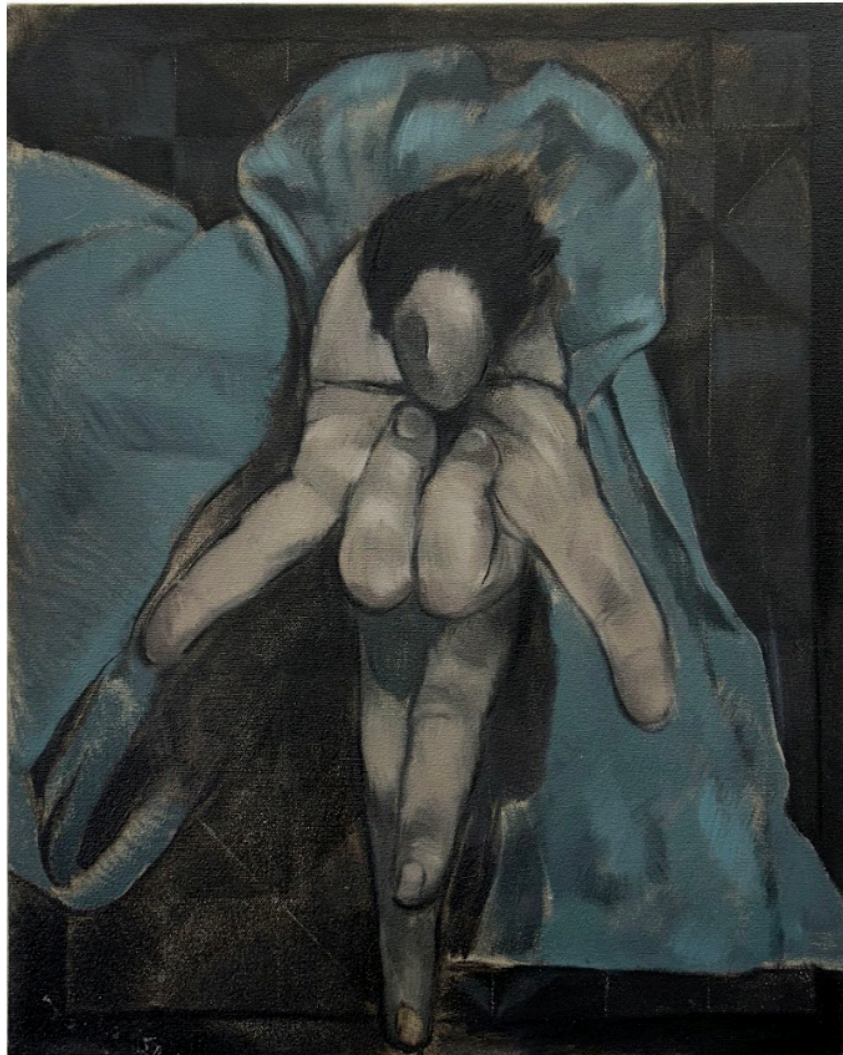
16 x 20 in.

HAWKINS HQ



Marni Marriott
Blank Paper, 2025
Oil on canvas panel.
8 x 10 in.

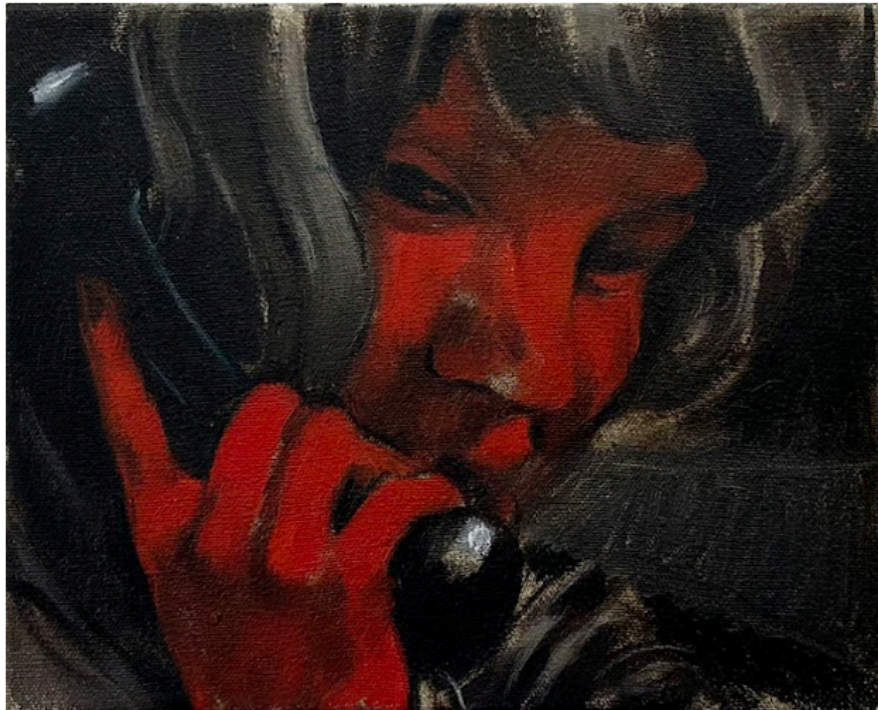
HAWKINS HQ



Marni Marriott
Effigy Doll, 2025
Oil on canvas.
16 x 20 in.



HAWKINS HQ



Marni Marriott
Gossip Train I, 2025
Oil on canvas.
8 x 10 in.



HAWKINS HQ



Marni Marriott
Gossip Train II, 2025
Oil on canvas.
8 x 10 in.

HAWKINS HQ



Marni Marriott

Self Portrait With Ruins and Contrapposto Twinks, 2025

Oil, graphite, and china marker on canvas panel.

24 x 30 in.

HAWKINS HQ



Marni Marriott
Barn Quilt, 2025
Oil on canvas.
48 x 48 in.